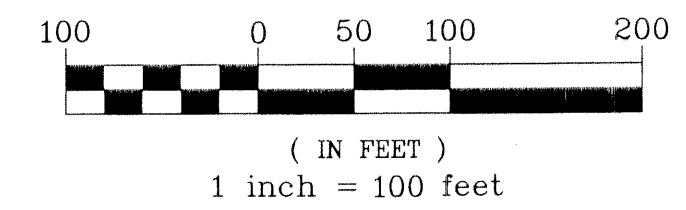


P.G.A. RESORT COMMUNITY GOLF COURSE PLAT

PORTIONS OF SECTIONS 9, 10, 15 AND 16, TOWNSHIP 42 SOUTH,
RANGE 42 EAST, CITY OF PALM BEACH GARDENS,
PALM BEACH COUNTY, FLORIDA.

GRAPHIC SCALE



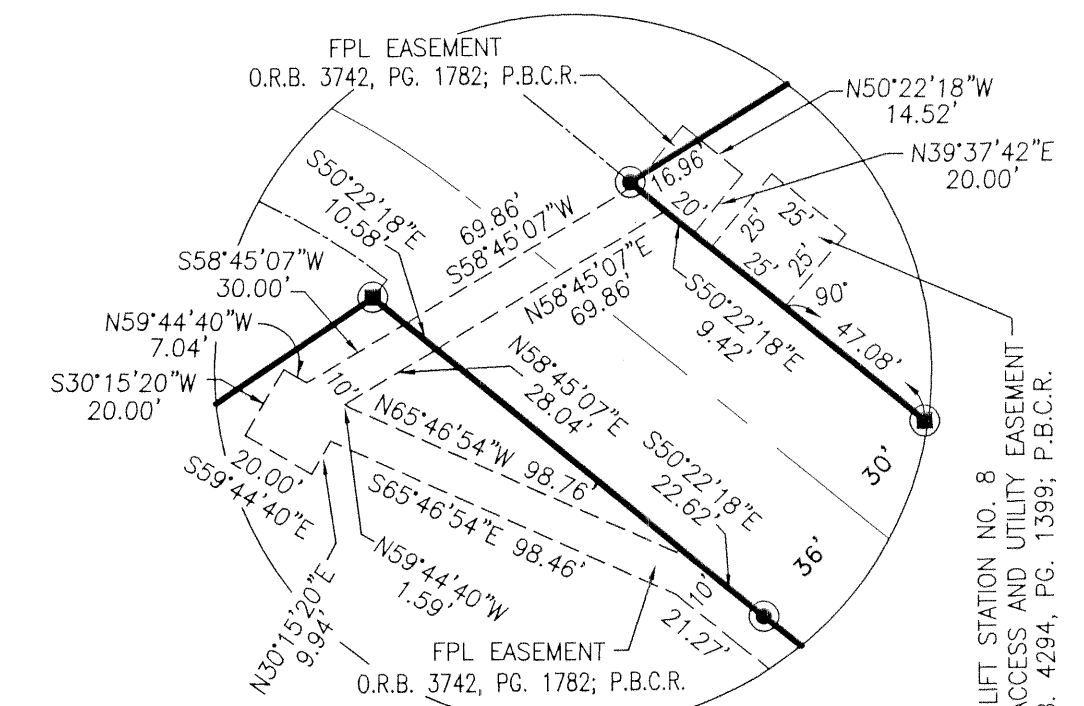
124

LEGEND (ABBREVIATIONS)

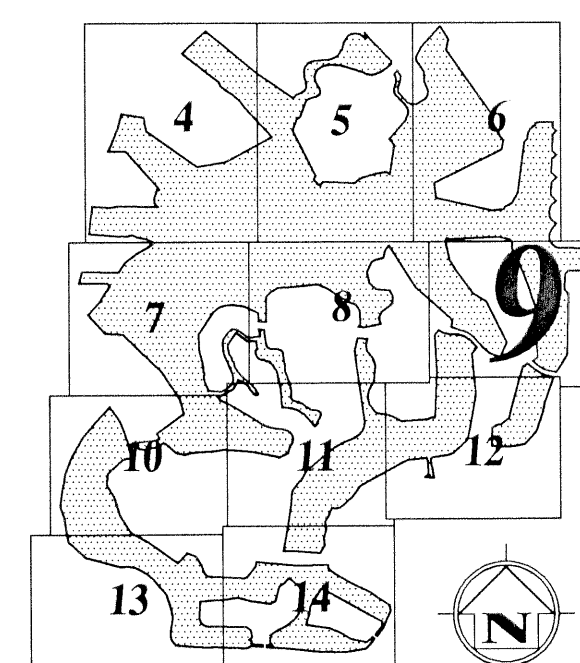
A.C.E.	=	Access Control Easement
C.	=	Calculated
CL	=	Center line
Δ	=	Delta (Central Angle)
D.E.	=	Drainage Easement
Fd.	=	Found
FPL	=	Florida Power and Light
LS	=	Land Surveyor
LB	=	Licensed Surveying Business
L	=	Length of Arc
O.R.B.	=	Official Records Book
Pg.	=	Page
P.B.C.R.	=	Palm Beach County Records
P	=	Plat
P.B.	=	Plat Book
P.G.A.	=	Professional Golfers Association
Set	=	Set Permanent Reference Monument stamped (P.R.M. LB 5610)
Found	=	Found Permanent Reference Monument
P.R.M.	=	Permanent Reference Monument
R	=	Radius
U.E.	=	Utility Easement
W.C.	=	Witness Corner
W.M.E.	=	Water Management Easement in favor of Northern Palm Beach County Improvement District
W.M.M.E.	=	Water Management Maintenance Easement in favor of Northern Palm Beach County Improvement District

SURVEYOR'S NOTES:

- 1.) Bearings are based on the North line of the plat of P.G.A. RESORT COMMUNITY PLAT OF IRONWOOD No.1 (P.B. 42, Pages 9 and 10) said North line having a bearing of South 89°29'05" East.
- 2.) "No buildings or any kind of construction or trees or shrubs shall be placed on any easement without prior written approval of all easement beneficiaries and all applicable City of Palm Beach Gardens approvals or permits as required for such encroachments".
- 3.) NOTICE: This plat, as recorded in its graphic form, is the official depiction of the subdivided lands described herein and will in no circumstances be supplanted in authority by any other graphic or digital form of the plat. There may be additional restrictions that are not recorded on this plat that may be found in the Public Records of this county.
- 4.) Found Permanent Reference Monuments (Fd. P.R.M.) shown hereon not labeled with a number were illegible or unmarked.
- 5.) Northern Palm Beach County Water Control District is now known as Northern Palm Beach County Improvement District.



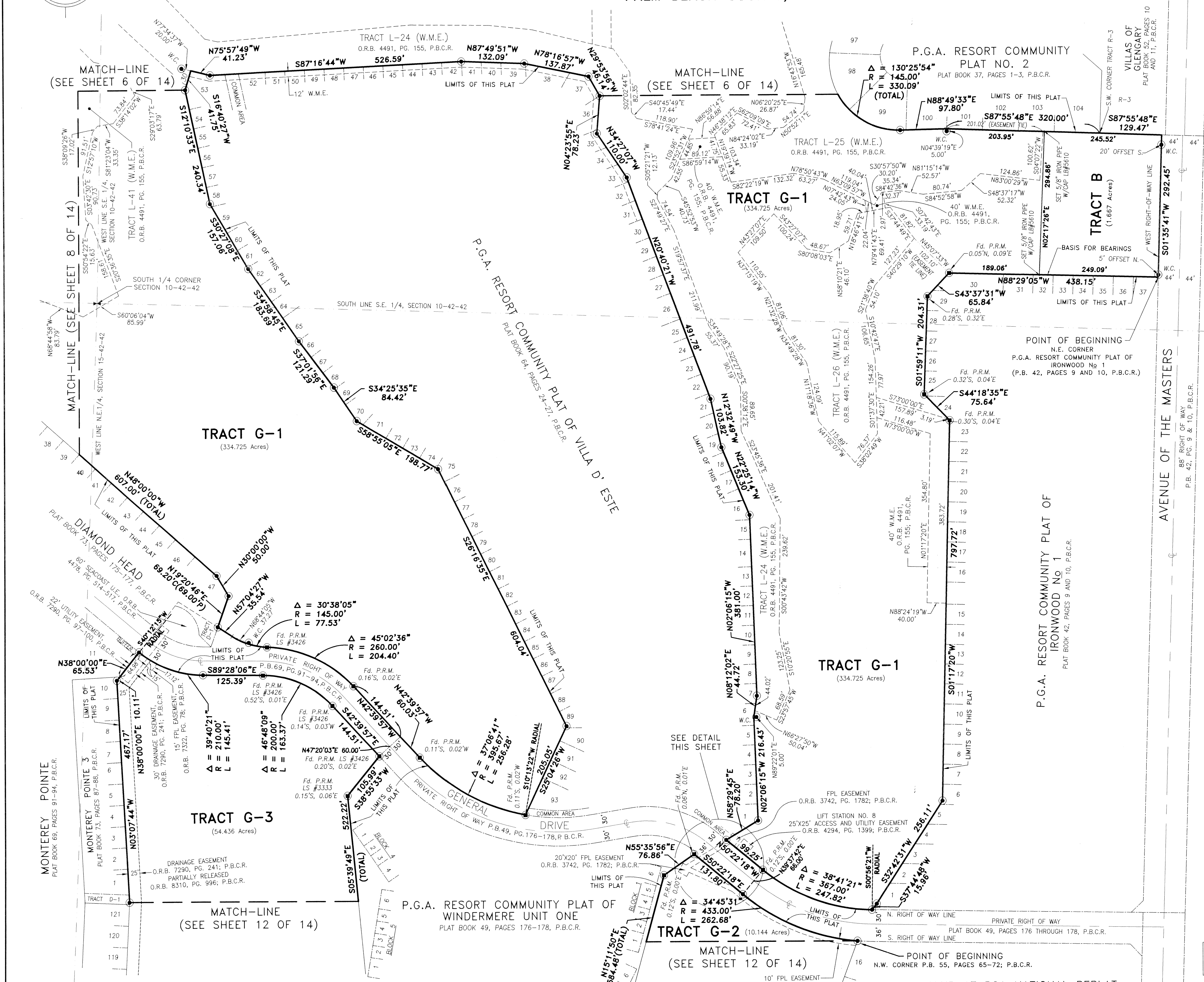
DETAIL
NOT TO SCALE



KEY MAP

This Instrument Prepared By:
Wilson E. Way
2200 PARK CENTRAL BLVD. NORTH
SUITE 100
POMPANO BEACH, FLORIDA 33064
(954) 974-2200

CC CONSULTANTS
ENGINEERS SURVEYORS PLANNERS
LANDSCAPE ARCHITECTS ENVIRONMENTAL CONSULTANTS



MONTEREY POINTE
PLAT BOOK 69, PAGES 91-94, P.B.C.R.

MONTEREY POINTE 3
PLAT BOOK 73, PAGES 87-88, P.B.C.R.

MONTEREY POINTE 4
PLAT BOOK 73, PAGES 89-90, P.B.C.R.

MONTEREY POINTE 5
PLAT BOOK 73, PAGES 91-92, P.B.C.R.

MONTEREY POINTE 6
PLAT BOOK 73, PAGES 93-94, P.B.C.R.

MONTEREY POINTE 7
PLAT BOOK 73, PAGES 95-96, P.B.C.R.

MONTEREY POINTE 8
PLAT BOOK 73, PAGES 97-98, P.B.C.R.

MONTEREY POINTE 9
PLAT BOOK 73, PAGES 99-100, P.B.C.R.

MONTEREY POINTE 10
PLAT BOOK 73, PAGES 101-102, P.B.C.R.

MONTEREY POINTE 11
PLAT BOOK 73, PAGES 103-104, P.B.C.R.

MONTEREY POINTE 12
PLAT BOOK 73, PAGES 105-106, P.B.C.R.

MONTEREY POINTE 13
PLAT BOOK 73, PAGES 107-108, P.B.C.R.

MONTEREY POINTE 14
PLAT BOOK 73, PAGES 109-110, P.B.C.R.

MONTEREY POINTE 15
PLAT BOOK 73, PAGES 111-112, P.B.C.R.

MONTEREY POINTE 16
PLAT BOOK 73, PAGES 113-114, P.B.C.R.

MONTEREY POINTE 17
PLAT BOOK 73, PAGES 115-116, P.B.C.R.

MONTEREY POINTE 18
PLAT BOOK 73, PAGES 117-118, P.B.C.R.

MONTEREY POINTE 19
PLAT BOOK 73, PAGES 119-120, P.B.C.R.

MONTEREY POINTE 20
PLAT BOOK 73, PAGES 121-122, P.B.C.R.

MONTEREY POINTE 21
PLAT BOOK 73, PAGES 123-124, P.B.C.R.

MONTEREY POINTE 22
PLAT BOOK 73, PAGES 125-126, P.B.C.R.

MONTEREY POINTE 23
PLAT BOOK 73, PAGES 127-128, P.B.C.R.

MONTEREY POINTE 24
PLAT BOOK 73, PAGES 129-130, P.B.C.R.

MONTEREY POINTE 25
PLAT BOOK 73, PAGES 131-132, P.B.C.R.

MONTEREY POINTE 26
PLAT BOOK 73, PAGES 133-134, P.B.C.R.

MONTEREY POINTE 27
PLAT BOOK 73, PAGES 135-136, P.B.C.R.

MONTEREY POINTE 28
PLAT BOOK 73, PAGES 137-138, P.B.C.R.

MONTEREY POINTE 29
PLAT BOOK 73, PAGES 139-140, P.B.C.R.

MONTEREY POINTE 30
PLAT BOOK 73, PAGES 141-142, P.B.C.R.

MONTEREY POINTE 31
PLAT BOOK 73, PAGES 143-144, P.B.C.R.

MONTEREY POINTE 32
PLAT BOOK 73, PAGES 145-146, P.B.C.R.

MONTEREY POINTE 33
PLAT BOOK 73, PAGES 147-148, P.B.C.R.

MONTEREY POINTE 34
PLAT BOOK 73, PAGES 149-150, P.B.C.R.

MONTEREY POINTE 35
PLAT BOOK 73, PAGES 151-152, P.B.C.R.

MONTEREY POINTE 36
PLAT BOOK 73, PAGES 153-154, P.B.C.R.

MONTEREY POINTE 37
PLAT BOOK 73, PAGES 155-156, P.B.C.R.

MONTEREY POINTE 38
PLAT BOOK 73, PAGES 157-158, P.B.C.R.

MATCH-LINE (SEE SHEET 6 OF 14)

MATCH-LINE (SEE SHEET 8 OF 14)

MATCH-LINE (SEE SHEET 12 OF 14)

MATCH-LINE (SEE SHEET 6 OF 14)

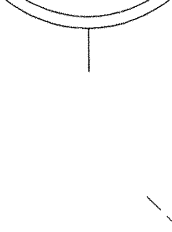
MATCH-LINE (SEE SHEET 12 OF 14)

MATCH-LINE (SEE SHEET 12 OF 14)

MATCH-LINE (SEE SHEET 6 OF 14)

MATCH-LINE (SEE SHEET 12 OF 14)

MATCH-LINE (SEE SHEET 12 OF 14)



S.E. CORNER SECTION 10-42-42

POINT OF BEGINNING
N.E. CORNER
P.G.A. RESORT COMMUNITY PLAT OF
IRONWOOD No 1
(P.B. 42, PAGES 9 AND 10, P.B.C.R.)

P.G.A. RESORT COMMUNITY PLAT OF
IRONWOOD No 1
PLAT BOOK 42, PAGES 9 AND 10, P.B.C.R.

POINT OF BEGINNING
N.W. CORNER P.B. 55, PAGES 65-72, P.B.C.R.

BARCLAY CLUB AT PGA NATIONAL REPLAT
PLAT BOOK 55, PAGES 65-72, P.B.C.R.

P.G.A. RESORT COMMUNITY PLAT OF
WINDERMERE UNIT ONE
PLAT BOOK 49, PAGES 176-178, P.B.C.R.

